



**KILLARK®**

## INSTALLATION, OPERATION & MAINTENANCE DATA SHEET

FOR FIELD INSTALLATION OF HINGE-4, HINGE-9L & HINGE-9R STAINLESS STEEL HINGES FOR ELECTRICAL ENCLOSURES



## STAINLESS STEEL HINGES FOR ELECTRICAL ENCLOSURES

### CAUTION:

Before installing, make sure you are compliant with area classifications, failure to do so may result in bodily injury, death and property damage. Do not attempt installation until you are familiar with the following procedures. All installation must comply with the applicable Electrical Code.

Make sure that the circuit is de-energized before starting installation or maintenance.

Verify that the installation is grounded. Failure to ground will create electrical shock hazards, which can cause serious injury and or death.

Technical information, advice and recommendations contained in these documents is based upon information that Killark believes to be reliable. All the information and advice contained in these documents is intended for use only by persons having been trained and possessing the requisite skill and know-how and to be used by such persons only at their own discretion and risk. The nature of these instructions is informative only and does not cover all of the details, variations or combinations in which this equipment may be used, its storage, delivery, installation, check out, safe operation and maintenance. Since conditions of use of the product are outside of the care, custody and control of Killark, the purchaser should determine the suitability of the product for his intended use, and assumes all risk and liability whatsoever in connection therewith.

**KILLARK®**



3940 Dr. Martin Luther King Drive  
St. Louis, MO 63113

P/N 00901198 FORM NO. K0260 R08/08 ECO-02-057-08

Page 1 of 3

## 1. DIRECTIONS FOR INSTALLATION

Before starting any work, be sure the supplying circuit to the enclosure is turned **OFF**. When replacing an existing hinge or hinges, use the existing holes, but, use the new hardware supplied with the new hinge. If the existing mounting hole threads are stripped out, it will be necessary to relocate the hinge and drill new holes. It is recommended that a #25 (.149" dia.) drill be used for the self-tapping, thread forming screws supplied. For new installations or when relocating a hinge, be sure the box and cover are assembled and secured by at least 2 bolts (one at each end of enclosure) to properly align the bolt holes. On some enclosures, it may be necessary to grind the flange area to provide a flat, even surface for mounting the hinges.

1. Using the drawings and dimensions (on reverse side) as a guide, position the hinge assembly on the edge of the enclosure. Locate and mark the mounting holes for the top (cover) portion of the hinges then center-punch and drill the 2 holes in the cover.
2. Install the 2 screws provided to secure the top hinge portion.
3. Hold the bottom (box) portion of the hinge against the box flange and drill the 2 holes, using the hinge as a guide. Install the 2 screws provided to secure the hinge.
4. Repeat the above procedure for each hinge. When all hinges are in place and tight, unbolt the cover and test the operation of the hinges.
5. Be sure the hinges do not bind anywhere along their turning arc.

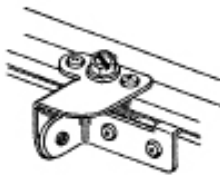
## 2. OPERATIONAL & MAINTENANCE DATA

These hinges should be lubricated periodically with a light oil to prevent binding, and should be inspected regularly for damage. If a hinge is damaged, the entire hinge assembly must be replaced.

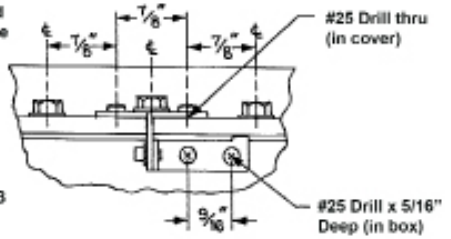
**Warning:** Always turn **OFF** the supplying circuit before opening the enclosure.



**HINGE-4**

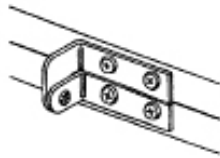


Hinge 4 can be mounted directly on the centerline of a cover bolt, or 7/8" above or below a cover bolt, as shown

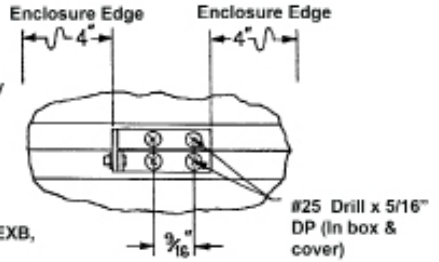


For use with Killark DB series enclosures

**HINGE-9L**



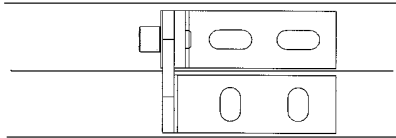
Hinge-9 should be mounted approximately 4" from top or bottom edge of Enclosure



For use with Killark EXB, XB AND XJB Series Enclosures.

HINGE-9L is for mounting the hinge on the left side

**HINGE-9R**



HINGE-9R is for mounting the hinge on the right side



3940 Dr. Martin Luther King Drive  
St. Louis, MO 63113

P/N 00911850 FORM NO. KO687 R01/06 ECO-8-021-04